

# DESIGN A COSTUME



# HOW DESIGN-A-COSTUME WORKS



## Unleash Your Creativity with Our Customizable Options

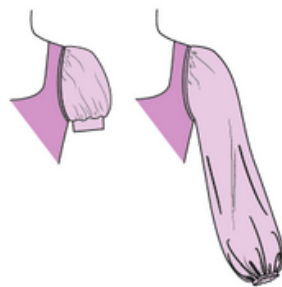
With the rising cost of almost everything around us, consumers are seeking the most economical ways to thrive. That's why we've introduced our new **Design-A-Costume** option. These basic suits come at great prices and boast amazing quality, allowing you to become the designer. Customize your costume with our available options. You choose. Add a skirt, change the sleeves, pick your color, you can even pick your fabric, feathers, fringe, bows, applique, stones.....the possibilities are endless, and you stay within budget. If you prefer, we can add the stoning for you, or you can choose to do it yourself to save even more. If you don't see what you are looking for, contact us. We can design to suit your needs. We are adding more designs to the collection all the time.

***Don't wait – Contact us today and start designing your perfect costume!***

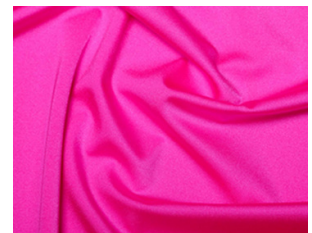


**Add A Skirt**

**Add Sleeves**

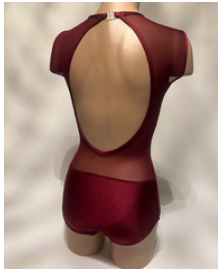


**Change To Pants  
Long, short, Capri**



**Choose Your  
Color & Fabric**

# BASIC SUIT OPTIONS



## Basic Suit - 101

This suit has sweetheart neckline. fully lined panties and front of top. Mesh back, belly area and top of front.

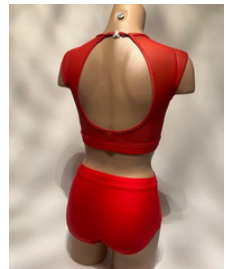
Options: Pant, sleeve & skirt variations can be added



## Basic Suit - 102

2 piece suit with sweetheart neckline, fully lined panties and front of top. Mesh back and top of front.

Options: Pant, sleeve & skirt variations can be added



## Basic Suit - 103

2 piece suit with straight neckline, fully lined panties and front of top. Mesh back and top of front.

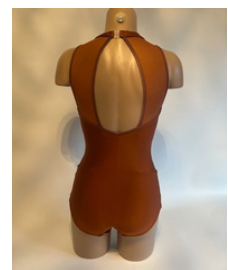
Options: Pant, sleeve & skirt variations can be added



## Basic Suit - 104

This suit has round neck with front mesh inset., mesh back pieces. Panties are fully lined, front of suit is lined.

Options: Pants & skirt variations can be added.





# BASIC SUIT OPTIONS



## Basic Suit - 105

This suit has round neck with front mesh inset., mesh back pieces. Pants are fully lined, front of suit is lined.

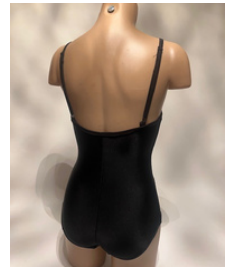
Options: Pants & skirt variations can be added.



## Basic Suit - 106

Cami Leotard with mesh inset. Fully lined front and back, adjustable straps

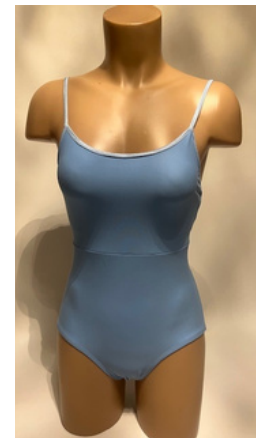
Options: skirt variations can be added.



## Basic Suit - 107

Cami Leotard with high waisted bra section. Fully lined front with adjustable straps

Options: skirt variations can be added.



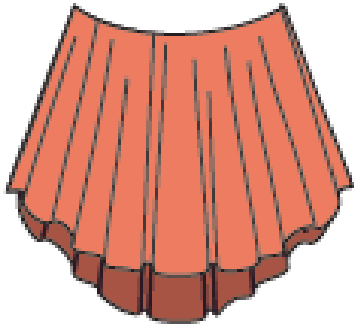
## Basic Suit - 108

Cami Leotard with fully lined front and adjustable straps

Options: skirt variations can be added.

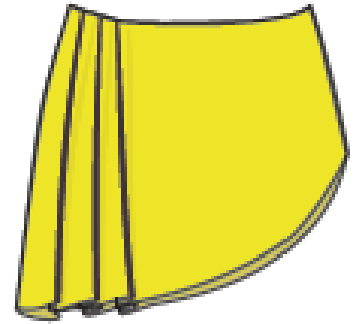


# DESIGN OPTIONS



## 200-Skirt Option

Full skirt lower in the back.



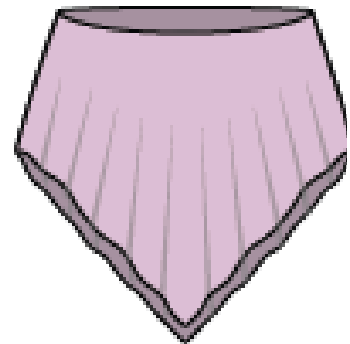
## 201-Skirt Option

Full skirt, higher on left side with pleating on longer right side.



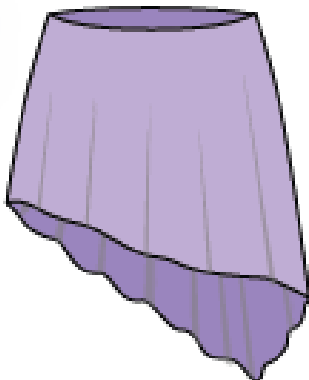
## 202-Skirt Option

Semi full skirt, lower in the back. Short and long version available



## 203-Skirt Option

Pointed both front and back.  
Lower in the back.

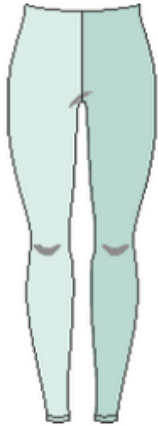


## 203-Skirt Option

Asymmetrical design. Lower in the back. Short and long version available

**More Skirt Design Options Coming - Contact us if you don't see what you are looking for.**

# DESIGN OPTIONS



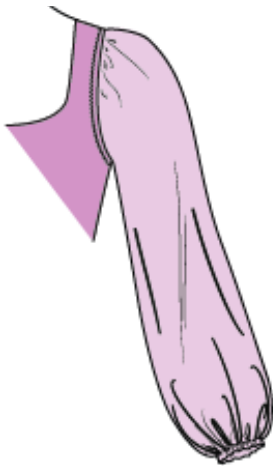
## 300-Legging Style Pant - Long Pant

These pants can be any length, Long, capri and short style

## 301-Short Pant Option

## 302-Capri Length Option

## More Pant Variations Coming

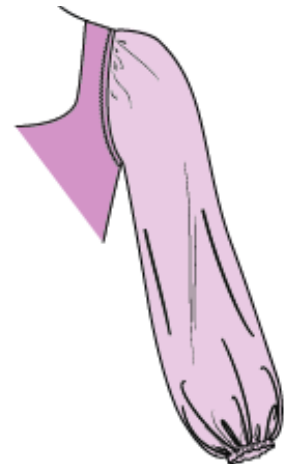


## 400-Long Puffy Sleeve

Long puffy sleeve with bottom cuff.

## 401-Long Split Puffy Sleeve

Long puffy sleeve split up middle with cuff on bottom.



## 402-Short Puffy Sleeve

Short puffy sleeve split up middle with cuff on bottom.



## 403-Long Set In Sleeve

Long set in sleeve. Option variation for finger tip, thumb or wrist length

## 404-Short Flutter Sleeve

Short circular flutter sleeve.



## More Design Options Coming